

LEASEHOLD



Flat

1 BEDROOM FLAT ON EDGWARE WAY, EDGWARE

Auction Guide

£120,000

FEATURES

- 1 bedroom top floor retirement apartment
- Private balcony off living room
- Residents communal lounge
- Lifts to all floors
- Newly painted & decorated
- Gated parking area



SPACE
RESIDENTIAL

1 Bedroom Flat located in Edgware

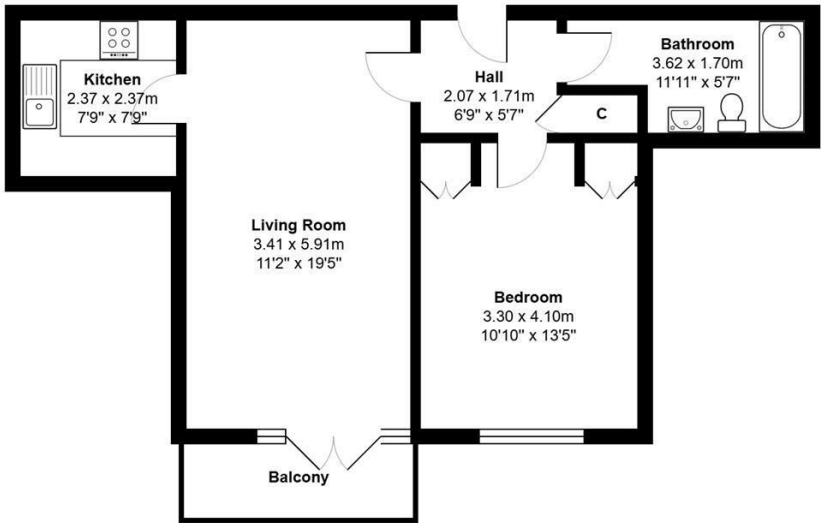
FOR SALE BY AUCTION VIA AUCTION HOUSE LONDON

Guide Price = £120,000+

For Sale By Public Auction 10th September 2025 09:30 am. To inspect the legal documents for this property go to Auction House London website to download the legal pack

A Vacant Second Floor One Bedroom Retirement Flat

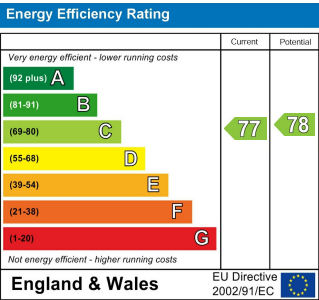
Tenure
Leasehold. The property is held on a 125 year lease from 25th December 1992 (thus approximately 92 years unexpired).



Total Area: 53.1 m² ... 571 ft² (excluding balcony)
All measurements are approximate and for display purposes only

Call us on
0208 906 2222
info@spaceresidential.com
spaceresidential.com

Council Tax Band
D



Agents Note: Whilst every care has been taken to prepare these particulars, they are for guidance purposes only. All measurements are approximate and are for general guidance purposes only and whilst every care has been taken to ensure their accuracy, they should not be relied upon and potential buyers are advised to recheck the measurements.

